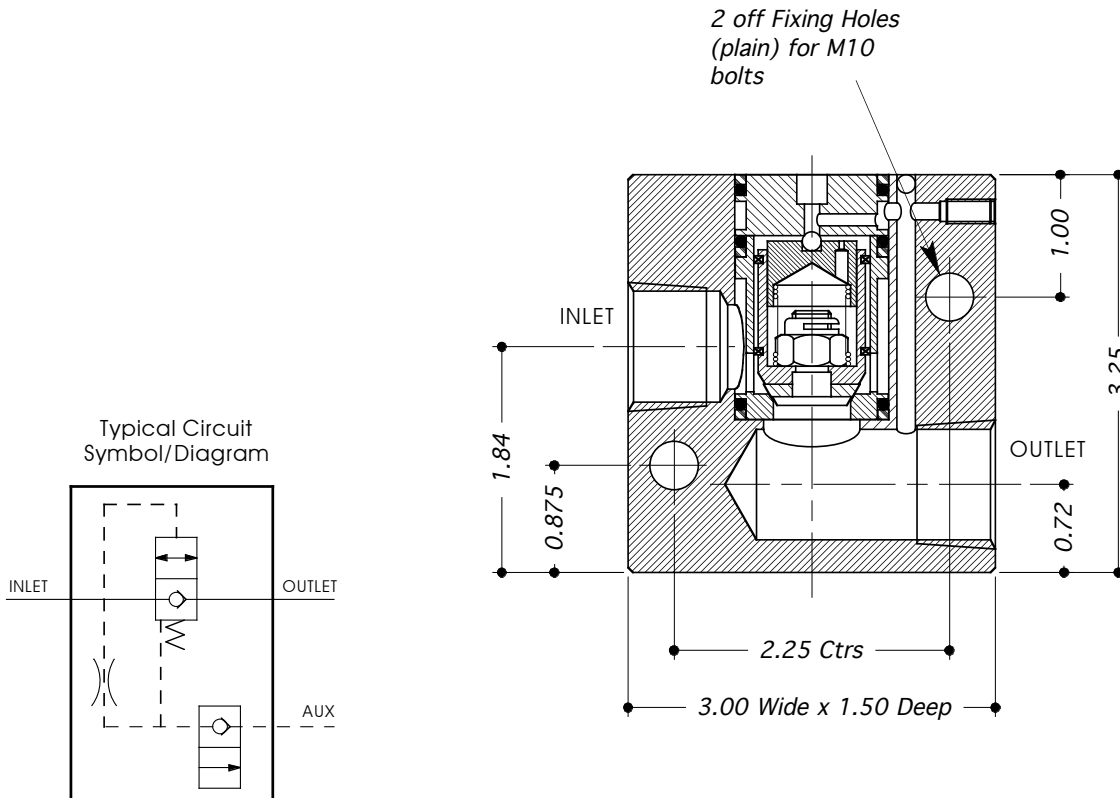


UNLOADER VALVE TYPE: UL75



- 2 POSN / 2 PORTED MILD STEEL - ENP (EN1A / 220M07) VALVE WITH ACTUATOR OPTIONS.
- SUITABLE FOR LIQUID USE.
- ALL DIMENSIONS IN INCHES.



TECHNICAL SPECIFICATION		ORDERING EXAMPLE
Material Option (non-std)	A = Aluminium Alloy (HE30) S = Stainless Steel (AISI 316/1.4404)	—
Valve Type:	UL75	UL75
Porting / Connection Options:	P = BSP (Parallel) N = NPT (Taper)	N
Actuator Options	Low Press. Pilot: Type: A4 (150 psi Max) Pilot Ratio: 270 : 1	L
	Mechanical: * Types: L = Lever, PB = Push Button, R = Remote Operation	
Max. Working Press: Liquid	4,500 psi (HE30 valve) 5,500 psi (AISI 316 valve) 3,000 psi (EN1A valve)	4.5K
Port Size:	3/4"	
Valve Seat Mat'l: Liquid	Stainless Steel - 316/1.4404	
Seal Material:	Viton (other materials available by request)	
CV Value:	1.98	
Dry Weight: (kg)	1.0	
Working Temperature Range:	-10°C to +80°C	

Technical Specification Notes:-

* Mechanical Actuators are "specials" only associated with the **UL75** valve.

Technical Data Sheets for individual valve/actuator assemblies are available upon request.